

FOR SALE

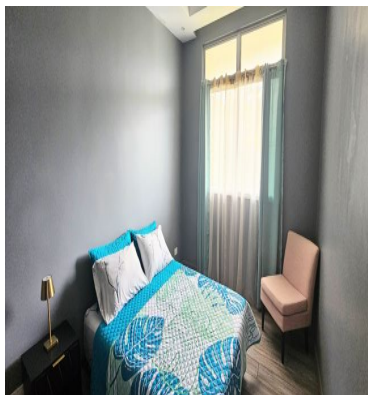
\$ 3,800,000.00 USD

Costa Rica - Alajuela

San Ramón

Listing ID: 400193286088

Located directly on the main highway entering Ciudad Quesada and just minutes from the downtown core, this expansive 32,000+ square meter property presents a rare opportunity for commercial, residential, or mixed-use development in one of the fastest-growing areas of San Carlos. With excellent highway frontage, high visibility, and strategic positioning near major tourism and commercial hotspots, this property is ideally suited for a wide variety of projects including retail centers, industrial facilities, residential developments, condominiums, commercial plazas, hotels, warehouses, or a combination of residential and commercial use. The region continues to experience strong growth and development, with major national and international businesses expanding into the area, including the anticipated arrival of PriceSmart and other large chain stores. This ongoing expansion makes the property an outstanding long-term investment opportunity in an up-and-coming commercial corridor. The land already has water and electricity infrastructure in place capable of supporting industrial or large-scale commercial operation



SEE PROPERTY ON GOOGLE MAPS



LAURA SMALLWOOD
Sales Agent
1 7053092030
lsmallwood8472@gmail.com
<https://www.arenal-lvp.com>



RE/MAX LAKE & VOLCANO

Calle 2 y, Av. 1 Esquina, Provincia de Guanacaste, Tilarán, Barrio El Carmen, 50801, Costa Rica

Each office is independently owned and operated