

# FOR SALE

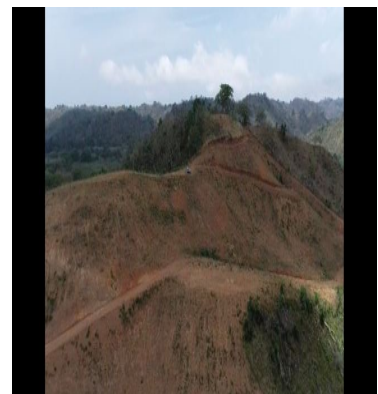
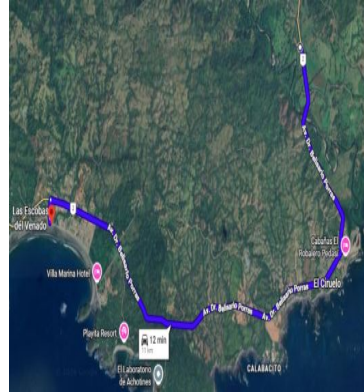
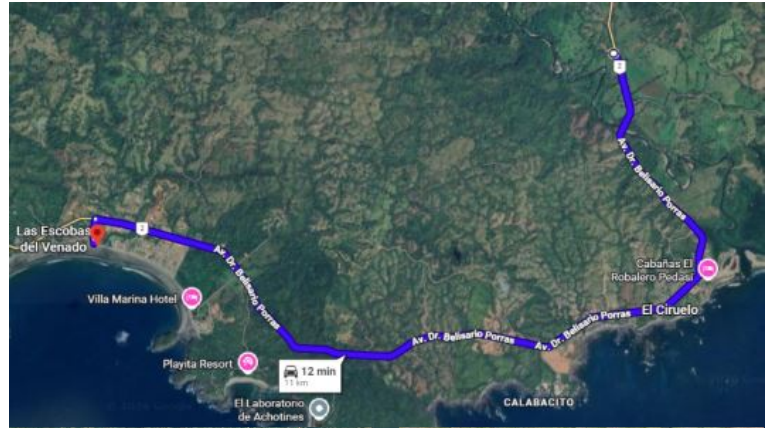
\$ 450,000.00 USD

Panama - Los Santos

Guarare - El Espinal

Listing ID: 003244106023

Strategically located 49,543.80 m<sup>2</sup> land parcel (approximately 12.24 acres) available for sale on the main road to Playa Venao, one of Panama's fastest-growing tourism, residential, and investment destinations. The property offers excellent visibility and direct access from the main road, making it an outstanding opportunity for developers, investors, hospitality concepts, or mixed-use projects. A conceptual master plan for a residential and commercial development has already been prepared, including preliminary plans and technical documentation. The new owner may continue with the existing vision or develop an entirely new concept based on their investment strategy. Property Highlights: 49,543.80 m<sup>2</sup> of land (approx. 12.24 acres). Strategic location near Playa Venao. Main road frontage. Strong commercial visibility. Internal access road already in place. Development-friendly topography. Titled property. Free of liens and encumbrances. Existing Structures: 70 m<sup>2</sup> house. 130 m<sup>2</sup> covered office structure. 52 m<sup>2</sup> storage building. Ideal For: • Residential d



SEE PROPERTY ON GOOGLE MAPS



JOSE SALAS  
Sales Agent  
507 69559142  
[jose.salas@remax-millennium.com](mailto:jose.salas@remax-millennium.com)  
[www.remax-millennium.com](http://www.remax-millennium.com)



**RE/MAX MILLENIUM**

Av Centenario, Edf Supermercado REY, PB, Costa del Este, Ciudad de Panamá.

Each office is independently owned and operated