

FOR SALE

\$ 2,200,000.00 USD

Panama - Panamá

Panama - Pacora

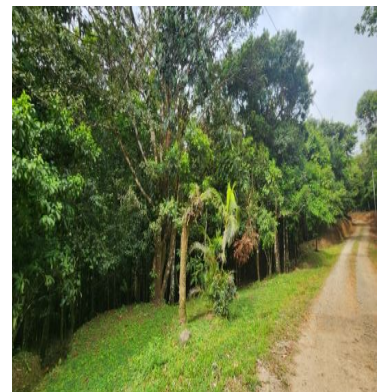
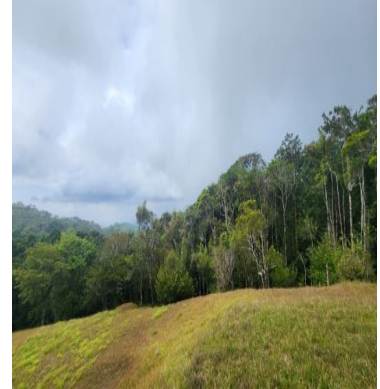
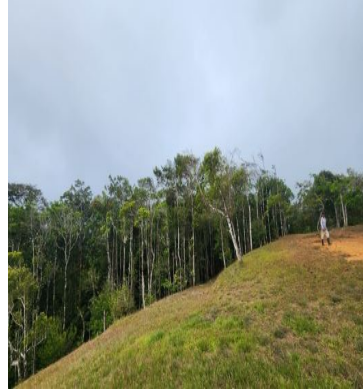
Listing ID: 003244012061

Exceptional opportunity to acquire approximately 135.9 acres (55 hectares) of pre-mountain forest land located in the beautiful highlands of Cerro Azul, Panama. The property is situated within the Central Mountain Range of Panama and offers a unique combination of natural beauty, privacy, ecological value, and development potential. The property features a cool climate year-round, elevations ranging from approximately 600 to 1,005 meters above sea level, spectacular mountain scenery, and terraces with views toward the Pacific Ocean. The land benefits from:

- Road access to the front of the property.
- Electricity available at the entrance.
- Excellent cellular coverage.
- Natural stream water within the property.
- Public road frontage of approximately 200 meters.
- Over 1.3 kilometers of depth, creating outstanding privacy and development flexibility.

The property is ideal for multiple uses, including:

- Potential Uses
- Mineral or spring water extraction and bottling operations.
- Eco-resorts and boutique mountain hotels.
- Luxury cabins



[SEE PROPERTY ON GOOGLE MAPS](#)



MARIA FLORES

Sales Agent

507 66280756

maryflores@remax-millennium.com

www.remax-millennium.com



RE/MAX MILLENIUM

Av Centenario, Edf Supermercado REY, PB, Costa del Este, Ciudad de Panamá.

Each office is independently owned and operated