

FOR SALE

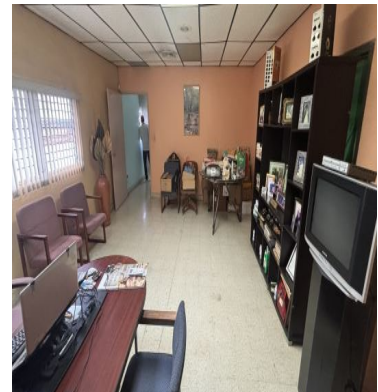
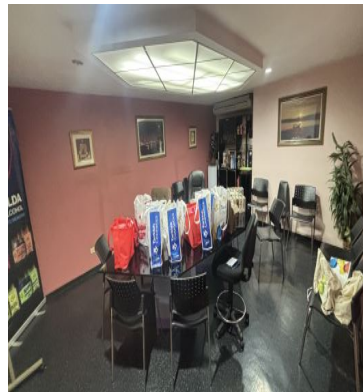
\$ 999,999.00 USD

Panama - Panamá

Panama - Rio Abajo

Listing ID: 003033098148

Strategic investment with strong return potential: Located in a high-demand central area, this property is a prime opportunity for companies seeking urban storage, distribution hubs, or operational space, as well as investors targeting income-generating commercial assets. LAND USE C2 AND RM1. Prime central location: Immediate access to main city roads Close to commercial areas, banks, and logistics zones High-traffic, well-established urban setting Key features: Spacious layout suitable for storage Functional structure adaptable to multiple uses Full utility access Excellent connectivity for logistics operations Investment potential: Ideal for distribution center, warehouse, or dark store Strong and growing demand for centrally located storage Income-generating potential through leasing Long-term appreciation opportunity Perfect for: Logistics & distribution companies E-commerce & retail operations Businesses needing immediate storage in the city Commercial real estate investors



[SEE PROPERTY ON GOOGLE MAPS](#)



ROCIO MOLINA

Sales Agent

507 69817859

rocio@remax-infinitypa.com

www.remax-infinitypa.com



RE/MAX INFINITY

C. 69 Este, Panamá, Provincia de Panamá, Panamá

Each office is independently owned and operated