

FOR LEASE

\$ 3,007.00 USD

Honduras - Comayagua

Siguatepeque

Listing ID: 002893192044

CORPORATE BUILDING FOR LEASE | SIGUATEPEQUE

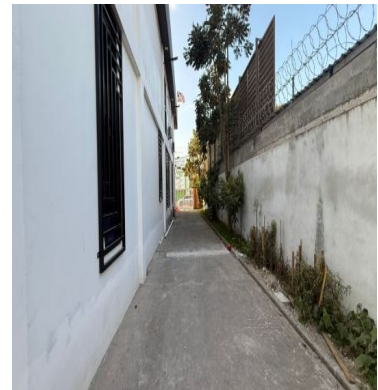
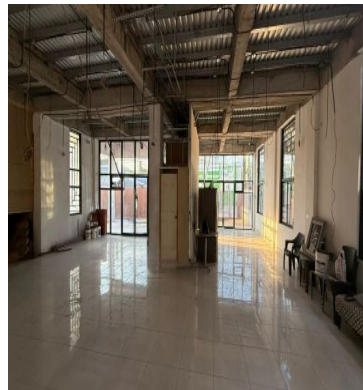
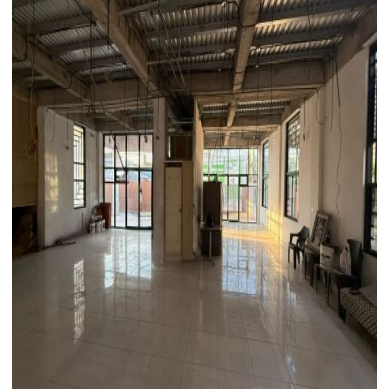
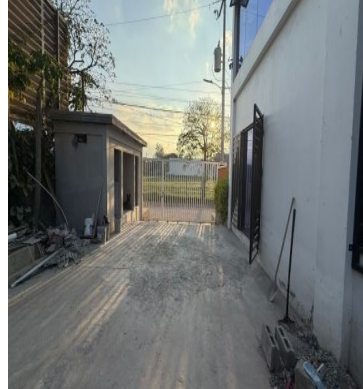
Some locations simply exist... and some spaces elevate a brand's presence from the very first impression. This modern corporate building in Siguatepeque offers a strategic combination of image, accessibility, and commercial functionality — ideal for businesses seeking growth, positioning, and long-term projection. Ground floor available only
Size: 286.84 m² Monthly Lease: \$3,007 Approx. Rate: \$10.48 per m² Features:

- Spacious parking area
- Drive-thru/service area
- Exterior restroom
- Modern corporate façade
- Excellent commercial exposure
- Easy vehicle access

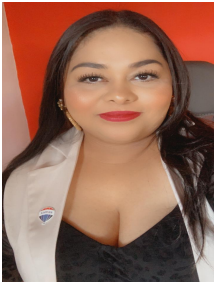
Ideal for:

- Medical clinics
- Restaurants
- Pharmacies
- Corporate offices
- Franchise businesses
- Financial institutions
- Customer service companies

In business, location creates opportunities... but the right image accelerates decisions. And this property projects exactly that: strength, modernity, and commercial presence. Schedule your private tour today.



[SEE PROPERTY ON GOOGLE MAPS](#)



SILVIA AVILA
Sales Agent
504 92987009
savila@remax-experts-hn.com



RE/MAX EXPERTS

San Pedro Sula Area, San Pedro Sula Area, Honduras

Each office is independently owned and operated