

FOR SALE

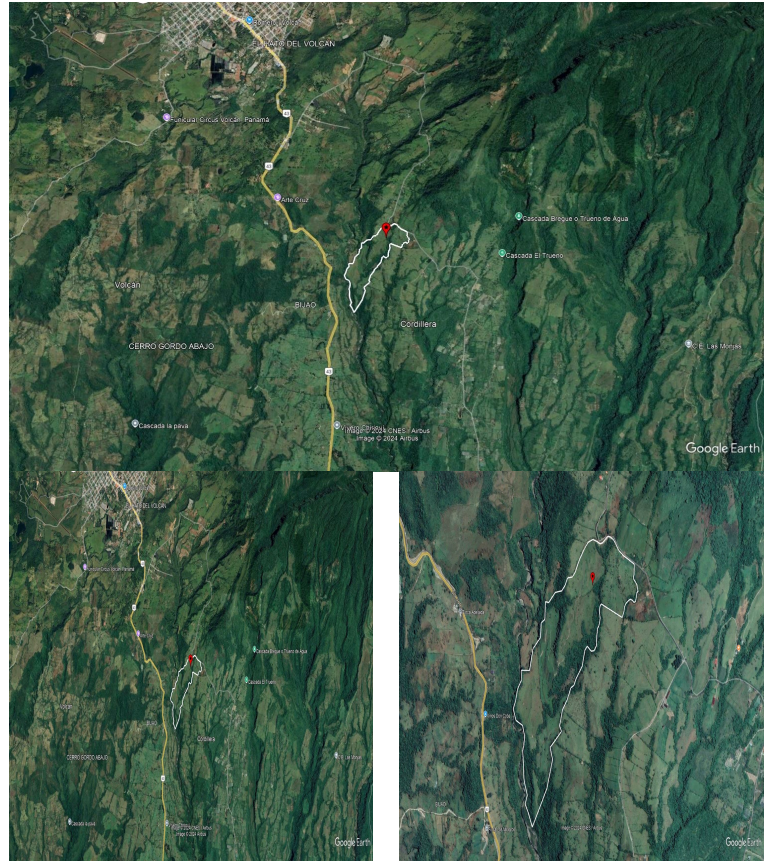
\$ 1,200,000.00 USD

Panama - Chiriquí

Boqueron - Cordillera

Listing ID: 002762520017

Are you looking for an exceptional cattle ranch? This 57-hectare property in Boquerón, Cordillera Arriba, offers everything you need to develop a successful project. Located at 1,200 meters above sea level, this ranch enjoys a cool climate year-round and boasts breathtaking 360° views, from the majestic Volcán Barú to the ocean and the surrounding mountains. Just 7 km and 15 minutes from the Volcán highway, the ranch is bordered by the Macho de Monte River and has two additional crystal-clear streams with year-round flowing water. With 400 meters of frontage along the main paved road of Cordillera Arriba, access is unbeatable. The largely rolling topography and extensive flat areas make it ideal for dairy farming or cattle fattening. It also features fruit trees, a house for workers, and access to electricity and water. Why choose this property? The location of this ranch is ideal. Just minutes away from Volcán, a thriving community known for its agriculture and natural landscapes, you'll have access to local markets, supplies, and services. Additionally, the safety and pe



[SEE PROPERTY ON GOOGLE MAPS](#)



HARRY ALVARADO

Sales Agent

507 64860816

harry.alvarado@remax-highlands.net

www.remax-highlands.net



RE/MAX HIGHLANDS

Chiriqui Montaña, Chiriquí, Panama

Each office is independently owned and operated