

# FOR SALE

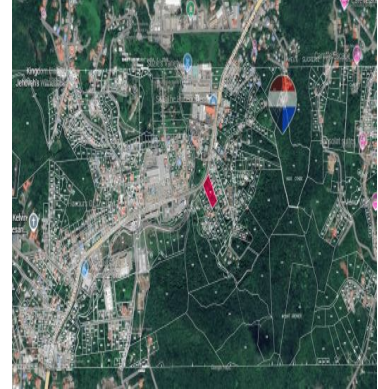
\$ 1.00 USD

Saint Lucia - Gros-Islet

Bois d Orange

Listing ID: 002452275016

Positioned in the rapidly expanding commercial hub of Bois D'Orange, this exceptional 1.11 acre (0.45 hectare) parcel presents a rare investment opportunity in one of Saint Lucia's most strategic business corridors. With valuable highway frontage and excellent visibility, the property is ideally suited for a wide range of commercial developments including retail plazas, office spaces, warehouses, mixed use projects, or service-based businesses seeking strong exposure and accessibility. Bois D'Orange has quickly evolved into one of the island's most active commercial regions, home to established businesses and thriving developments such as Orange Grove Shopping Centre, S & S Plaza, and numerous retail outlets, professional services, restaurants, and growing enterprises. The area continues to experience significant commercial expansion, making this an ideal location for forward thinking investors and developers. Its prime positioning along a major thoroughfare ensures easy access, high traffic flow, and excellent connectivity to Rodney Bay, Gros Islet, and Castries. Opportunit



[SEE PROPERTY ON GOOGLE MAPS](#)



LENIN VOLNEY  
Sales Agent  
758 4873629  
Lenin@GoldenAppleRealEstate.com  
<https://www.goldenapplerealestate.com/>



**RE/MAX GOLDEN APPLE**  
Volney Building Redit

Each office is independently owned and operated