

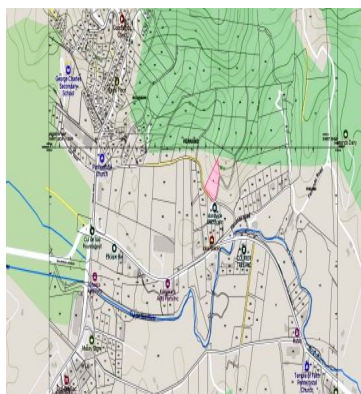
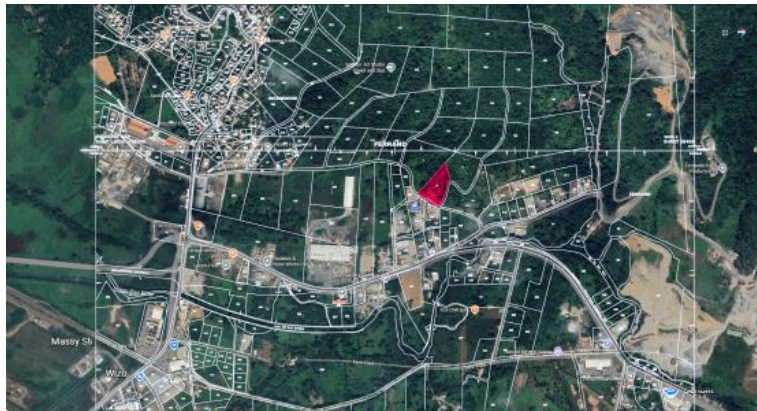
FOR SALE

\$ 1.00 USD

Saint Lucia - Castries
Castries

Listing ID: 002452275014

Positioned within the well-established and highly accessible commercial corridor of Cul-de-Sac, this 82,655 sq. ft. (1.898 acres) parcel presents a compelling opportunity for investors, developers, and business owners seeking a strategically located site with excellent potential. Set within a zone that supports commercial and light industrial activity, the property is ideally suited for a wide range of uses, from warehousing and distribution to service-based operations or mixed-use development. Its generous size also allows flexibility in design and layout, with ample room to accommodate expansion, parking, and supporting infrastructure. The land features a natural slope, which can be thoughtfully incorporated into development plans to enhance drainage, create tiered construction, or take advantage of elevation for visibility and presence. Located just minutes from established businesses, including KFC, and within close proximity to major road networks, the site benefits from steady traffic flow and convenient access to both Castries and the south of the island. This central positioning continues to make Cul-d



[SEE PROPERTY ON GOOGLE MAPS](#)



LENIN VOLNEY
Sales Agent
758 4873629
Lenin@GoldenAppleRealEstate.com
<https://www.goldenapplerealestate.com/>



RE/MAX GOLDEN APPLE
Volney Building Redit

Each office is independently owned and operated