

FOR SALE

\$ 112,638.00 USD

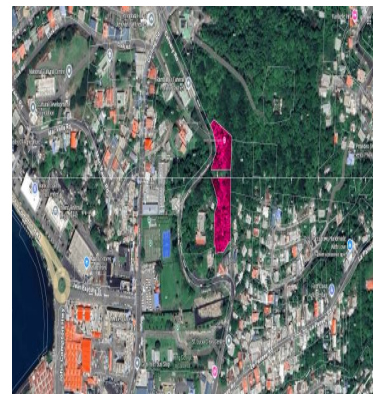
Saint Lucia - Castries

Castries

Listing ID: 002452275012

Positioned in the heart of Central Castries, along the well-known Calvary Road, Lots 1 and 2 present a rare and compelling opportunity to secure sizeable land in one of Saint Lucia's most strategic and high-demand locations.

Whether you're envisioning a residential development, a commercial venture, or a mixed-use concept, this offering places you right where convenience, visibility, and growth intersect. Set just minutes from the city centre, these parcels benefit from immediate access to government offices, schools, shopping, and key transport routes, making them exceptionally attractive for both residential living and business operations. It is this central positioning that gives the property its true value, offering seamless connectivity while remaining tucked within an established and easily accessible neighbourhood. Lot 1 spans approximately 14,482 square feet, while Lot 2 offers a more expansive 33,669 square feet, providing flexibility for a range of development possibilities. Lot 1- 14,482 sq. ft. at XCD\$21/sq. ft.=XCD \$304,122 (negotiable) Lot 2- 33,669 sq. ft. at XCD\$19/sq.



[SEE PROPERTY ON GOOGLE MAPS](#)



LENIN VOLNEY

Sales Agent

758 4873629

Lenin@GoldenAppleRealEstate.com

<https://www.goldenapplerealestate.com/>



RE/MAX GOLDEN APPLE

Volney Building Redit

Each office is independently owned and operated