

FOR LEASE

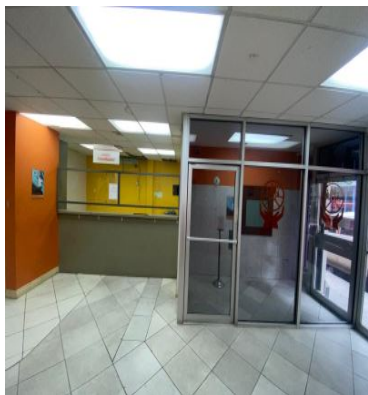
\$ 150,000.00 USD

Trinidad and Tobago - Port-of-Spain

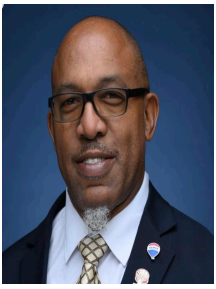
Port-of-Spain

Listing ID: 002022766284

Premium Corporate Commercial Space for Lease – Port of Spain, Trinidad Corner of Frederick Street & Park Street, Port of Spain (Former Eastern Credit Union Building) Positioned in the heart of Trinidad's capital, this strategically located commercial building offers an exceptional opportunity for large corporations, government entities, financial institutions, BPO operations, regional headquarters, and professional organizations seeking a highly visible and accessible business address. Approx. 6,200 sq. ft. Leasing Options Available: Entire Building – \$150,000/month Ground Floor (Frederick Street Side) – \$70,000/month Upstairs + Downstairs (Park Street Side) – \$90,000/month Corporate Property Highlights Prime Corner Location with Exceptional Visibility High Daily Pedestrian & Vehicular Traffic Wheelchair Accessible Facility Existing Emergency & Safety Infrastructure Installed Dedicated External Signage Opportunities Flexible Layout for Multi-Department Operations Separate Tenancy Configuration Available Ample Parking



[SEE PROPERTY ON GOOGLE MAPS](#)



MARVIN EDWARD
Sales Agent
868 3618083
marvinedward1971@gmail.com



RE/MAX REAL ESTATE GROUP

Corner of St. Augustine Circular and Streatham Lodge Road, Tunapuna

Each office is independently owned and operated