

FOR SALE

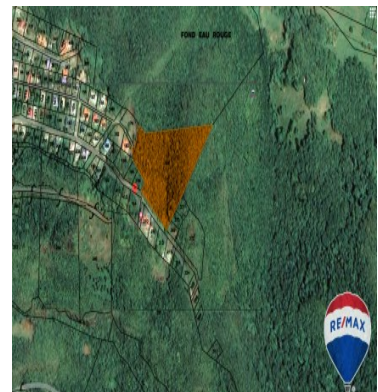
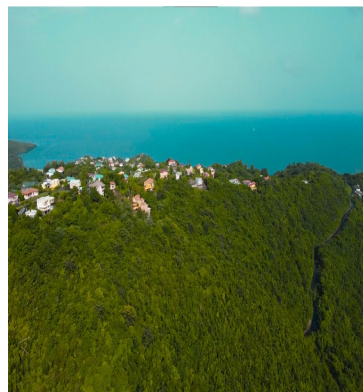
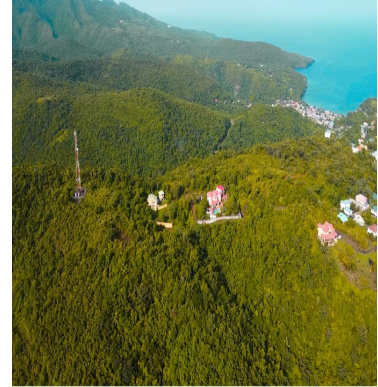
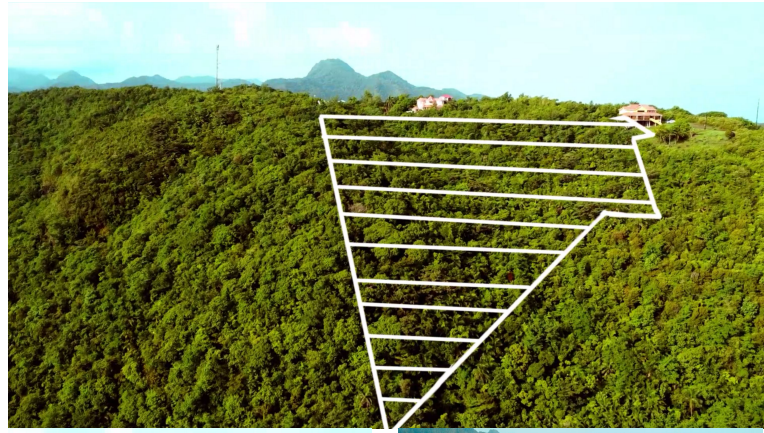
\$ 555,500.00 USD

Saint Lucia - Anse-la-Raye

Massacre

Listing ID: 500012017028

This lot is huge and stunning - an elevated lot in the hills north of Anse-la-Raye is priced with a developer in mind. At only approximately \$6.00 per sq ft, we don't expect this property to be on the market for long. The property boasts views north-east over the island with excellent breezes and plenty of space to provide for an economical development of highly desired homes lots of satisfactory sizes. Additionally, there are two access points to this property to make the construction go smoothly. This property borders Fond Eau Rouge and is on the top of the ridge. This must be seen with your development team and we're sure a deal will be made. Please contact us for more information - Survey Plan, Map Sheet, and Google Map Links are available.



[SEE PROPERTY ON GOOGLE MAPS](#)



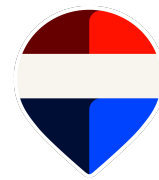
LENIN VOLNEY

Sales Agent

758 4873629

Lenin@GoldenAppleRealEstate.com

<https://www.goldenapplerealestate.com/>



RE/MAX GOLDEN APPLE

Rodney Bay, Gros Islet, Saint Lucia

Each office is independently owned and operated