

# FOR SALE

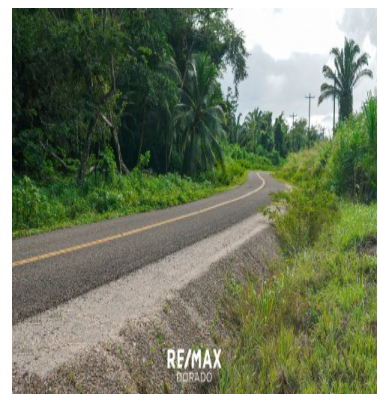
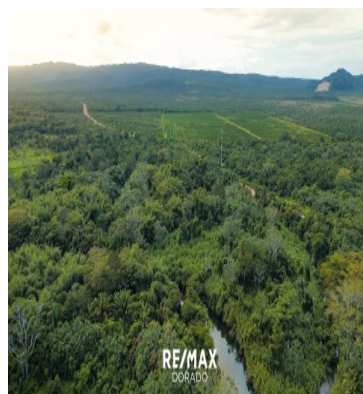
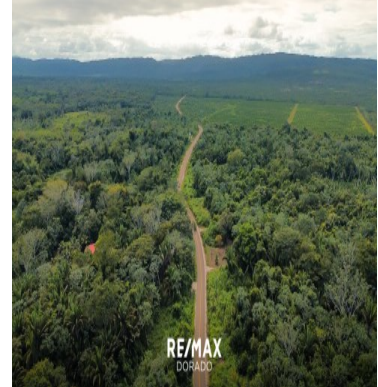
\$ 349,900.00 USD

Belize - Stann Creek District

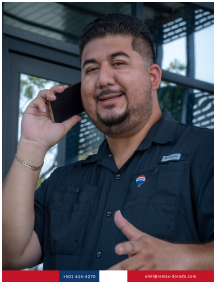
Mullins River

Listing ID: 100102310034

This property offers two parcels near the Village of Mullins River in Stann Creek district, Belize. The first parcel, an 8.8-acre resort, boasts over 2000 feet of riverfront, while the second parcel, 27.94 acres, sits across the road. Conveniently located approximately ½ mile west of the village, 1 mile from the Caribbean Sea, and 2 miles east of the Coastal Road, this property is ripe with potential. Development Highlights: Resort Parcel: Features cleared paths, access roads, and the first of five cabanas. Cabana #1 offers four independent rooms with en-suite bathrooms and a kitchen area. The property includes a security shed, a barracks, and coconut tree and royal palm plantations. Subdivision: Approximately 8 acres divided into 20 lots ranging from 0.25 to 0.37 acres each. Lot #1 is partially developed with a water well. The area also includes a green space and road access to each lot. Farm Area: Around 20 acres, including 10 acres of citrus (currently affected by blight) and 10 acres of natural vegetation. The farm can be expanded for fruit and vegetable cultivation. Infrastructure: Electri



[SEE PROPERTY ON GOOGLE MAPS](#)



**EMIL MONTERO**

Sales Agent

501 6144270

[emil@remax-dorado.com](mailto:emil@remax-dorado.com)

<https://www.remax-dorado.com>



## **RE/MAX DORADO II**

Belize City, Belize District, Belize

Each office is independently owned and operated