

# FOR SALE

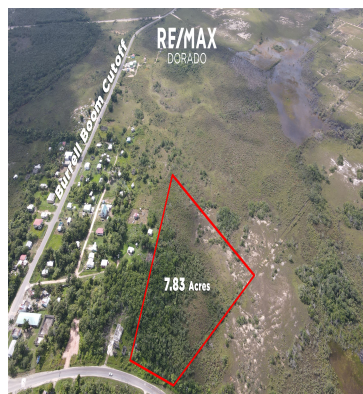
\$ 120,000.00 USD

Belize - Belize District

Hattieville

Listing ID: 100091941030

Introducing this rare, nearly eight acre property located on the George Price Highway, just a few yards from the Hattieville Roundabout that leads to the Burrell Boom Cutoff, this gem is conveniently situated for both commercial and residential use, with amenities such as gas station, school, churches, cool spots and grocery stores within the immediate area. A rare opportunity, this property is located just 25 minutes from Belize City and 3 minutes from Hattieville, ideally for commercial or industrial use, with key features such as main highway, electricity and water access and a small concrete structure built atop the property. Features:- 7.83 Acre property- Main Highway Access- Electricity and water access directly Infront of the property- Small Concrete Structure located on the property- 25-minute drive to Belize City and international airport- Ideal for Farmland, Warehouse Placement or Residential Subdivision



SEE PROPERTY ON GOOGLE MAPS



REMEL SOSA  
Sales Agent  
501 6302147  
remel@remax-dorado.com  
<https://www.remax-dorado.com>



## RE/MAX DORADO

Belize City, Belize District, Belize

Each office is independently owned and operated