

FOR LEASE

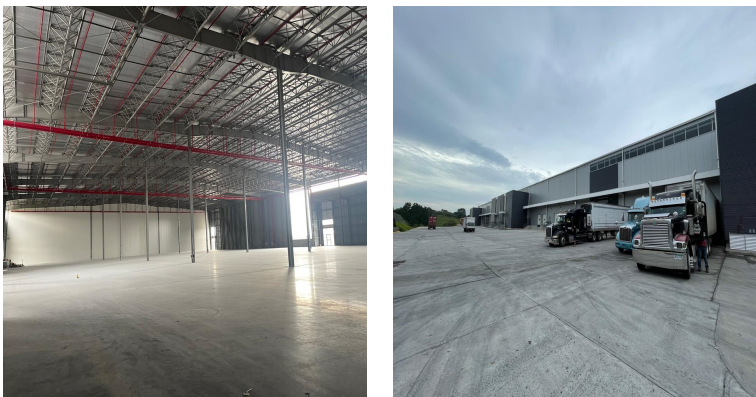
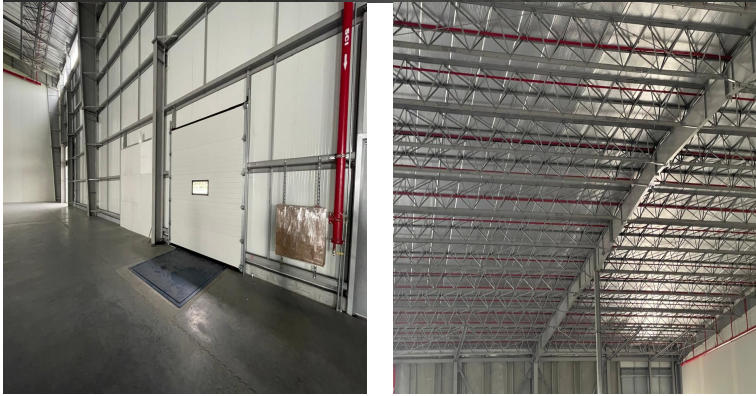
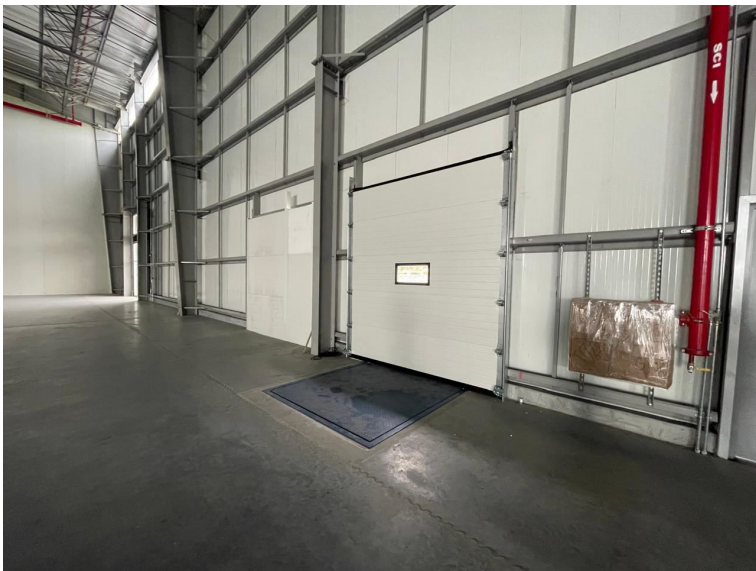
\$ 5,950.00 USD

[Panama - Panamá](#)

[Panama - Tocumen](#)

[Listing ID: 003033408027](#)

In Free Trade Zone: Warehouses: by the end of 2025 in the Free Trade Zone we will have warehouses from 700m2 onwards. The price will be approximately \$8.06 m2 In local area: Warehouses: they are finished and we have 9,950 m2 in modules ranging from 2,400m2. price from \$7.08 m2 I send you a presentation of the park. Preliminary conditions for leasing the warehouses: -Annual increase 3.5%. -1 month deposit plus 2 month rent in advance. -The monthly rent includes Administration and Maintenance Cost (CAM) and includes the maintenance of the structure and common areas of the winery. -The rent includes parking spaces for private vehicles. -PLP can provide the service of adapting additional facilities that the client requires under an additional budget -The modules include fire detection and suppression system in standard configuration. -The rental includes a dividing wall between each module -The rent does not include ITBMS -The rent does not include equipment or furniture. Initially requested: -Compliance with Law 23 "Know Your Customer". -Final approval of the Directors of THE PAR



[SEE PROPERTY ON GOOGLE MAPS](#)



JUAN GARCES
Sales Agent
507 62598273
juangarces@remax-infinitypa.com
www.remax-infinitypa.com



RE/MAX INFINITY

Panama - Ancon , Panamá, Panama

Each office is independently owned and operated