

FOR SALE

\$ 297,831.72 USD

Honduras - Cortes

Villanueva

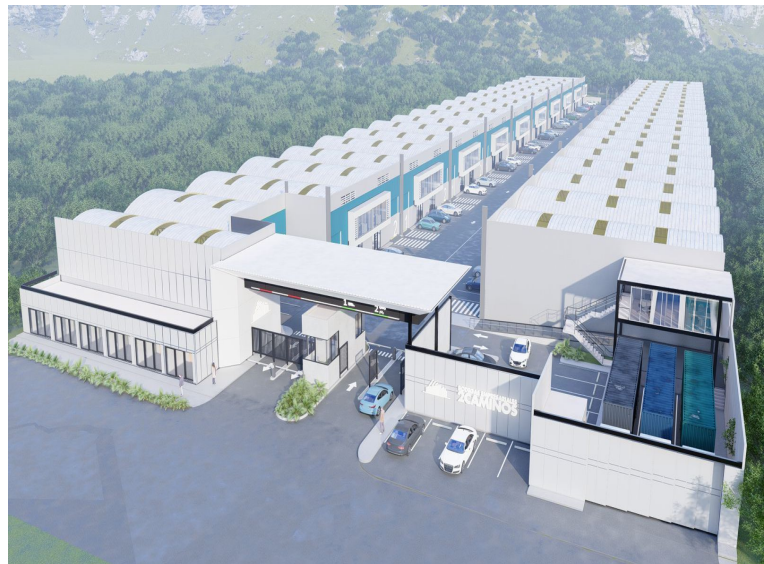
Listing ID: 002912914008

Dos Caminos Business Warehouses: Where Your Business Grows Imagine a state-of-the-art complex designed to drive your business forward, strategically located in Dos Caminos, just 14 km from San Pedro Sula. Surrounded by key neighbors such as Becamo, Cargill, Droguería Nueva, and Camas Olympia, this project offers convenience, innovation, and functionality for visionary companies. With 39 warehouses per phase across a total of 3 phases, the project provides modern spaces tailored to your needs. Warehouses start at 379.18 m², with prices from \$297,831.72, and include the option to add a mezzanine, maximizing your space. Top-tier infrastructure includes:

- Well water and storage tanks for reliable supply.
- Backup power plant to ensure uninterrupted operations.
- Trailer parking and 24/7 security for total peace of mind.

Commercial spaces designed for convenience The park will also feature 6 commercial units dedicated to health, banking, and food services, ensuring everything you need is within reach. Key dates:

- September 27: Inaugural event celebration.
- November: Construc



[SEE PROPERTY ON GOOGLE MAPS](#)



CARLOS LORENZANA
Sales Agent
504 89066788
clorenzana@remax-infinite-hn.com
<https://www.remax-infinite-hn.com>



RE/MAX INFINITE GROUP

San Pedro Sula Area, San Pedro Sula Area, Honduras

Each office is independently owned and operated