

# FOR SALE

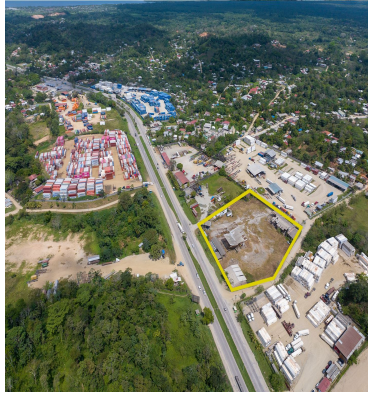
\$ 1,983,229.00 USD

Honduras - Cortes

Puerto Cortés

Listing ID: 002912913018

?? INDUSTRIAL PROPERTY FOR SALE | STRATEGIC LOCATION IN PUERTO CORTÉS - HONDURAS?? ?? Aldea Las Delicias, Puerto Cortés, Honduras ?? Prime location on Highway CA13, the main route connecting Tegucigalpa, San Pedro Sula, and Puerto Cortés, three of the most important strategic points in the country. ?? Key proximity for logistics and trade ? Only 4 km (5 min) from the Puerto Cortés Toll Station, ensuring quick and easy access. ? Just 10 km (15 min) from Puerto Cortés Port Terminal, the most important port in Honduras and one of the main ports in Central America, with global trade connections. ? Ideal location for businesses reliant on maritime trade and freight transport, ensuring efficiency in delivery times and reduced logistics costs. ?? Property Features ?? Total area: 13,912 m<sup>2</sup> (19,953 v<sup>2</sup>), providing ample space for industrial operations, storage, or commercial project development. ?? Built-up area: 2,860 m<sup>2</sup> in fair condition, distributed as follows: 4 industrial workshops. Storage or production warehouse. Administrative offices. Se



SEE PROPERTY ON GOOGLE MAPS



JOHN CASTRO  
Sales Agent  
504 33321669  
jcastro@remax-infinite-hn.com  
<https://www.remax-infinite-hn.com>



**RE/MAX INFINITE GROUP**

San Pedro Sula Area, San Pedro Sula Area, Honduras

Each office is independently owned and operated