

# FOR SALE

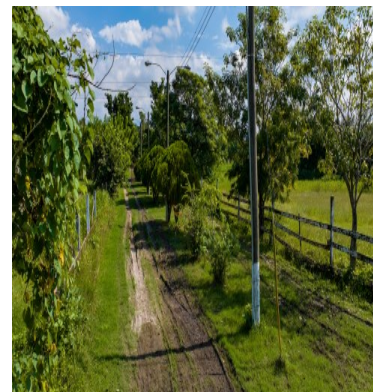
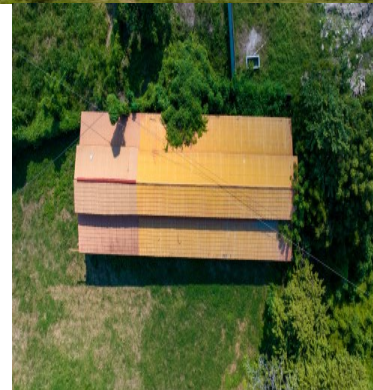
\$ 669,371.00 USD

Honduras - Cortes

Potreriillos

Listing ID: 002912913005

Welcome to the distinguished offer of this exceptional land in Potrerillos, Honduras, covering an area of 50,000 square yards. With a flat topography that covers five blocks, this land offers a versatile canvas suitable for agricultural, livestock projects or for the construction of a country house intended for relaxing on the weekends. Located a short distance of 2 kilometers from the urban perimeter of the municipality of Potrerillos, this enclave guarantees the perfect fusion between rural tranquility and convenience of access. Strategically located 35 kilometers from the city of San Pedro Sula, the industrial capital of Honduras, this land also stands as a unique opportunity for investors, builders and urban developers, thanks to its privileged location. The exclusive access to Highway CA5, the main road between Tegucigalpa and San Pedro Sula, just 50 meters away, gives this property a significant advantage in terms of connectivity and accessibility. This land, which unfolds like a canvas of possibilities, already houses a residence for the butler and spacious stables, providing a



[SEE PROPERTY ON GOOGLE MAPS](#)



**JOHN CASTRO**

Sales Agent

504 33321669

[jcastro@remax-infinite-hn.com](mailto:jcastro@remax-infinite-hn.com)

<https://www.remax-infinite-hn.com>



## **RE/MAX INFINITE GROUP**

San Pedro Sula Area, San Pedro Sula Area, Honduras

Each office is independently owned and operated