

# FOR LEASE

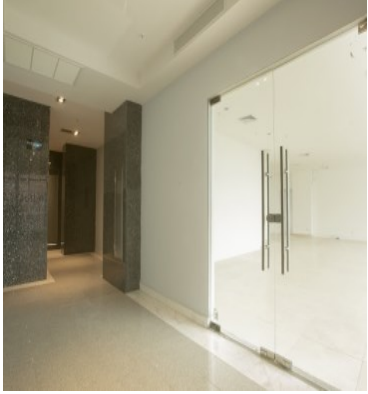
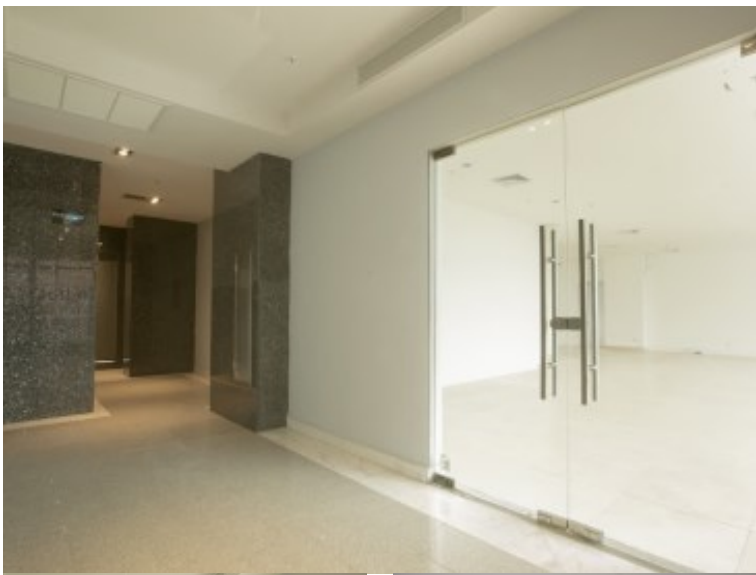
\$ 1,722.00 USD

[Panama - Panamá](#)

[Panama - Via Porras](#)

[Listing ID: 002832677019](#)

With an economy based mostly on the sphere of services, numerous banks, hotels, restaurants and some of the most complete and modern shopping centers in the country are located in this sector. In addition, important commercial chains have settled in this sector thanks to the fact that it is crossed by important highways and viaducts such as calle 50, via Brazil and via Israel. THE BUILDING Elevators to all floors indoor parking Power plant for the entire shopping center reserve water tank private deposits available Internet connection 24 hour security Glass doors security doors Automatic fire fighting system With a privileged location. It should be noted that this road offers us different exit accesses throughout its route, leaving us close to different banks, supermarkets, residential areas, shopping centers, hotels, restaurants, office buildings, library, Bus metro station and even in the Omar park , the largest and most important public park in Panama City, with 65 hectares of land. Via Porras ends at the Atlapa Convention Center, one of the most important convention



[SEE PROPERTY ON GOOGLE MAPS](#)



MARIO SANCHEZ  
Sales Agent  
507 68629607  
[mario.sanchezz@me.com](mailto:mario.sanchezz@me.com)  
[www.remaxluxurypty.com](http://www.remaxluxurypty.com)



## RE/MAX LUXURY PROPERTIES

Panama - 12 de Octubre, Panamá, Panama

Each office is independently owned and operated