

FOR SALE

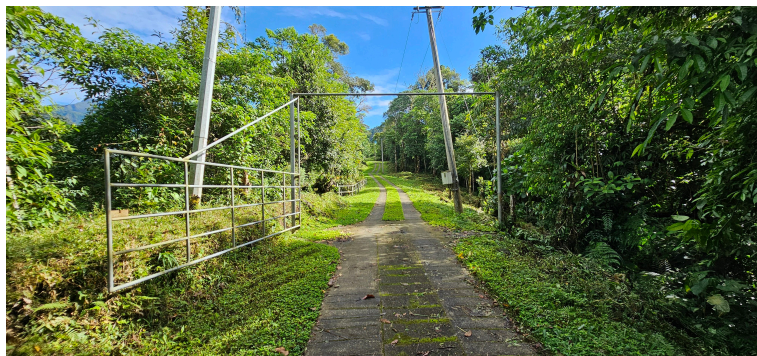
\$ 2,890,000.00 USD

Panama - Chiriquí

Chiriqui Montaña - David

Listing ID: 002762479070

This extraordinary 163-hectare (163 acre) titled agricultural farm is located in Guaca Arriba, the highest area of the David District, Chiriquí, with elevations ranging from 1,450 to 1,600 meters (4,760ft-5,250ft) above sea level. Strategically situated near Palmira del Banco and Los Mameyes, and just 7.6 km from the junction leading to Potrerillos Abajo and Guayabal, it offers a unique location with easy access to main roads. The farm blends nature and productivity with approximately 28 hectares of dense forest and extensive workable areas, ideal for coffee and other agricultural projects. Additionally, it boasts a large number of Hass avocado trees in full production, adding significant value to its agricultural potential. The property is equipped with comprehensive infrastructure, including camp areas, warehouses, offices, private rooms, a cold room, processing areas, greenhouses, an irrigation system with water pumps and pipes, as well as concrete lanes for internal access and operations. The farm is only 2 km from the paved road, with private electricity and internet access. With a cool year-round



[SEE PROPERTY ON GOOGLE MAPS](#)



HARRY ALVARADO

Sales Agent

507 64860816

harry.alvarado@remax-highlands.net

www.remax-highlands.net



RE/MAX HIGHLANDS

Chiriqui Montaña, Chiriquí, Panama

Each office is independently owned and operated