

FOR SALE

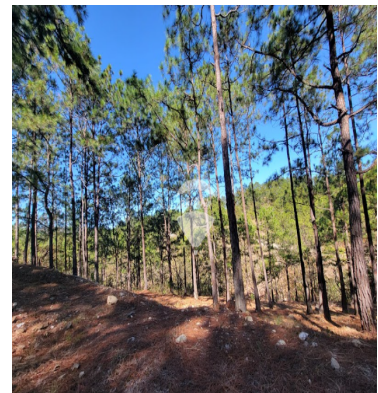
\$ 80,000.00 USD

El Salvador - Chalatenango

La Palma

Listing ID: 001463696004

Semi-flat land ideal for disconnecting from the city and breathing fresh, pure air, ideal for building a country house or cabin, with easy access just 800 meters from the northern trunk road (in time it is equivalent to 5 minutes from the major). In addition, the street to the land is private and has electric lighting, its diameter is 11 meters wide with gutters (compacted and ballasted street). Benefits: Electricity, drinking water 24 hours a day, pine trees and an excellent climate.



[SEE PROPERTY ON GOOGLE MAPS](#)



YESSENIA PERLERA

Sales Agent

503 22230000

yessenia.perlera@remax-central.com.sv

<http://www.remax-central.com.sv>



RE/MAX CENTRAL

Av. Olimpica 71 Av. Sur, Paseo General Escalón Torre Millennium, San Salvador

Each office is independently owned and operated