

FOR SALE

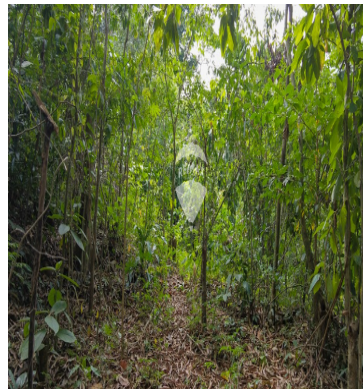
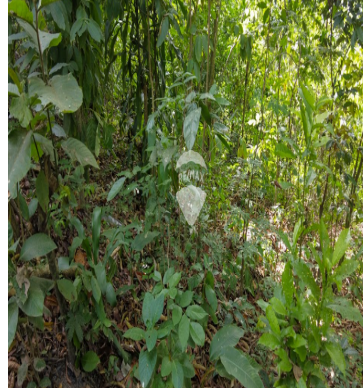
\$ 35,000.00 USD

El Salvador - San Salvador

Soyapango

Listing ID: 001462842025

Land Description Location: Land located in Soyapango, near the Korean Health Unit, in a quiet and somewhat secluded area, ideal for those seeking privacy and a connection with nature. Total Area: 788.99 square yards, offering enough space to build a comfortable home or develop a personal project. Topography: Flat: Mostly level, which facilitates construction. Semi-flat and Hilly: It also has characteristics that allow for creative architectural designs or terraces. Vegetation and Natural Resources: The land has fruit trees, such as sapote and others, making it perfect for those who enjoy the benefits of nature and seek a space to grow or relax. Potential Use: Residential: Perfect for building a home surrounded by vegetation, ideal for families or individuals seeking a more natural setting away from the noise of the city. Recreational: It can be used as a place of rest or recreation, taking advantage of the shade and the existing fruit trees. Future Investment: An attractive space for those who want to own land as a property or for future projects.



[SEE PROPERTY ON GOOGLE MAPS](#)



MAURICIO JAIME

Sales Agent

503 22230000

mauricio.jaime@remax-central.com.sv

<http://www.remax-central.com.sv>



RE/MAX CENTRAL

Av. Olimpica 71 Av. Sur, Paseo General Escalón Torre Millennium, San Salvador

Each office is independently owned and operated